

REDEFINING STANDARD FEATURES



The First Name In Trailers®

Our dry vans begin off the assembly line with more standard features than the competition. Eliminating what we define as standard features to be like other dry vans is not an option. But, it isn't the quantity of standard features that sets a Utility dry van apart; it's also the quality of those standard features. We've earned the industry's confidence by equipping each dry van with technology that makes it stronger, lighter and better.



Heavy-Duty Kingpin & Approach Plate Assembly

Approach plate supported by six formed "toes-down" channels to prevent dishing. The kingpin is AAR-rated and the whole assembly is secured to the bottom rails with stainless steel rivets.



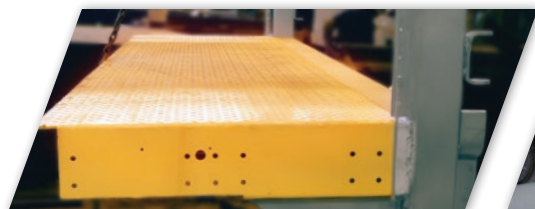
Support Legs

Aerospace-style wingplates have collared holes and embossed ribs for more strength and lower tare weight. Formed channel braces provide additional durability.



D.O.T. Rated Dock Bumper

Fully integrated into the rear threshold assembly, this high strength steel bumper complies with U.S. Department of Transportation (D.O.T.) and Transport Canada safety regulations.



27" Deep Integrated Threshold Plate Assembly

Fully welded to the buckplate and side gussets, the 27" threshold plate eliminates floorboard decay and delivers the maximum strength to resist dock plate damage and fork truck impact.



Hendrickson® HKANT 40K Air Ride/Slider System

The HKANT 40K includes a Heavy-Duty slider box and Quik-Draw® air-operated pin pull mechanism, improves load protection and lowers tare weight.



Bendix® TAB-6™ ABS System

Matched with Bendix spring brake chambers and slack adjusters, the TAB-6 ABS System delivers superior braking performance and improves operator safety.



Premium 5-Year Wheel End System

Warranted for 5 years parts and labor, the system includes precision-adjustable spindle nuts; cast aluminum hub caps and premium oil seals.



Diagonal Reinforcing Gussets on Slider Rails

Welded steel reinforcing gussets increase torsional stiffness and strength for superior slider rail stability.



6-Post Front Wall

Steel "tees" are welded to the approach plate between 4 posts and extruded aluminum corner posts for superior impact resistance, significantly lowering maintenance costs.

*Specifications, data, and images are subject to change without notice.



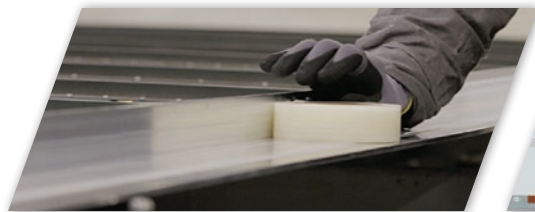
© 2017 Utility Trailer Manufacturing Co. 17295 Railroad St, City of Industry, CA 91748

www.utilitytrailer.com

REDEFINING STANDARD FEATURES



The First Name In Trailers®



Corrosion Protection

A kingpin section flooded in rust preventative coating, a stainless steel rear case and barrier tape on dissimilar metals reduces the potential for corrosion.



Ultra Road Shield™ Plus (URS+)

ASTM proven, this two coat acrylic system with urethane primer enhances corrosion protection, minimizes the effects of weathering and keeps the trailer looking better, longer.



Unique Tensioned Roof Design

Our bi-directionally tensioned aluminum roof skin has diagonal reinforcing plates at all four corners. It is supported by anti snag roof bows and is mechanically crimped around the top rail for moisture entry protection.



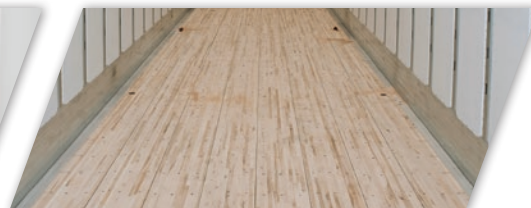
Stainless Steel Rear Door Frame

Corrosion resistant frame reduces maintenance costs and increases resale value. Plus its 110½" door opening height allows maximum forklift clearance.



80K Flush Steel Logistics Posts

Engineered and track tested to create maximum side wall strength, the design also provides 101" of inside width, and best-in-class cargo securement versatility.



Weather Tight Hardwood Floor System

Flooring is pre-undercoated to extend floor life. Weatherproof sealant is applied between every floorboard, Utility-designed gaskets are installed between the troughs and bottom rails for leak protection.



Injected Polyurethane Foam Core Composite Side Wall

Securely bonds exterior skin with interior lining panels for remarkable side wall strength, unparalleled durability and reduced tare weight.



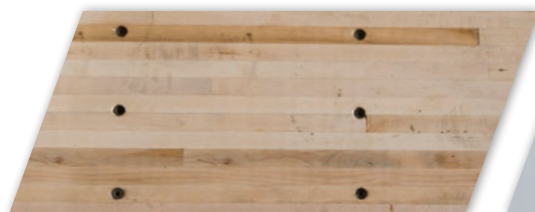
12" Galvanized Steel Wearband

Low-profile 80,000 psi high-strength galvanized steel wearband provides added impact protection, strength, and stiffness.



110½" Rear Door Opening Height

The 110½" rear door opening height is the highest in the industry, providing maximum forklift clearance for higher pallet loads.



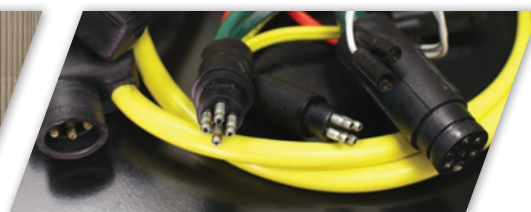
20,000 lb Floor Rating

The 4000D-X Composite comes standard with a high payload floor system, with a 20,000 lb fork truck front axle floor rating and three screws per floor board.



Snag-Free® Interior Lining

PATENTED Galvanized interior lining is squeeze riveted with fully recessed fasteners to outer skin and side posts, creating a **Snag-Free®**, high strength, composite wall.



Utility-Designed Modular Electrical Harness

The sealed main harness has 100% soldered internal connectors to prevent corrosive deicing chemicals from traveling through connections into the wiring.

*Specifications, data, and images are subject to change without notice.

